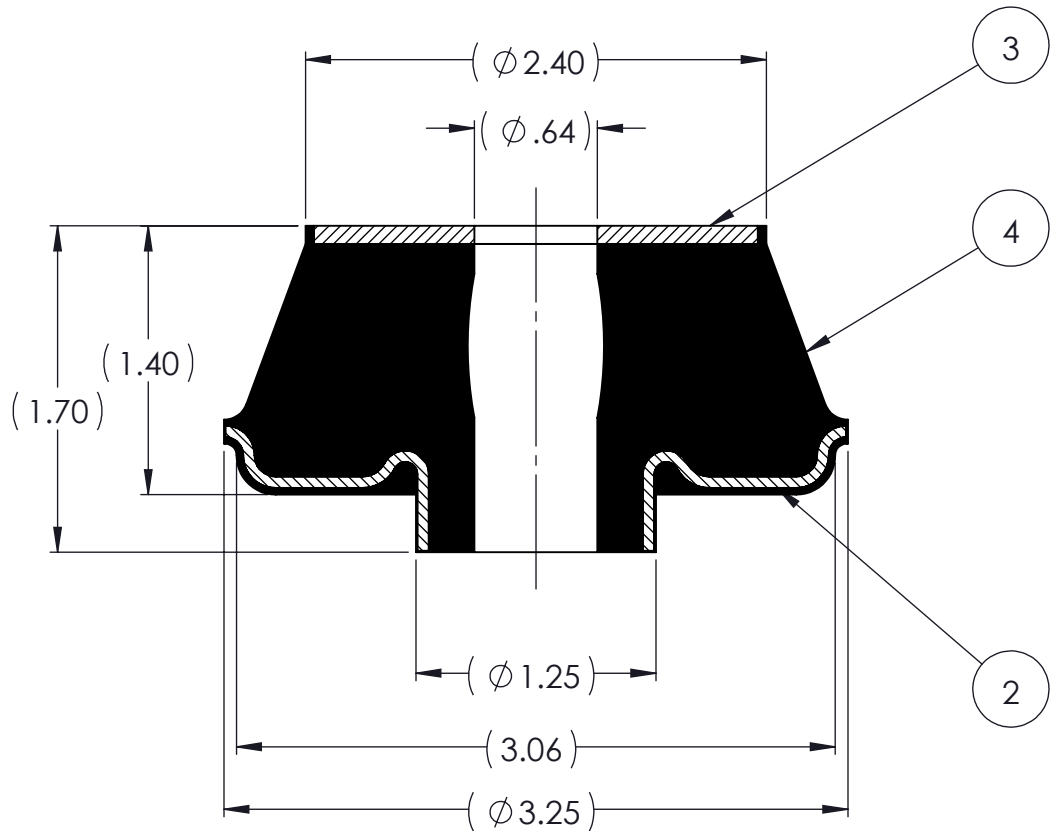
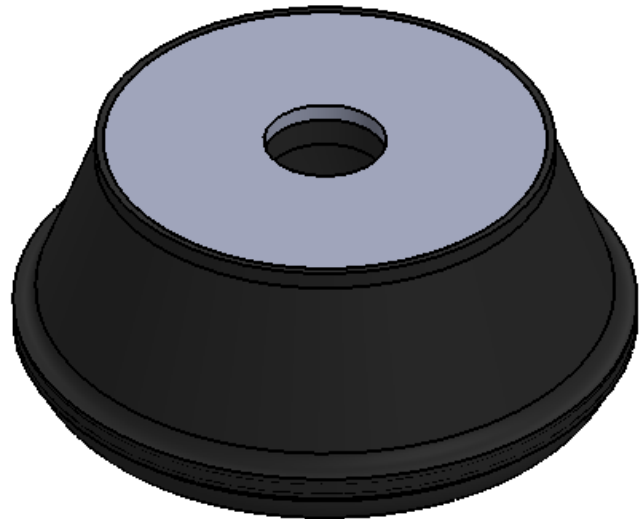


REVISIONS			
REV.	DESCRIPTION	DATE	APPROVED
1	INITIAL RELEASE OF DRAWING	10/16/2014	BS

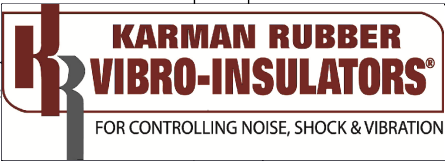


NOTES:

- 1 MATERIAL: ELASTOMER AND DUROMETER OF 40, 50, 60 OR 70 TO BE SPECIFIED.
- 2 ALL DIMENSIONS ARE REFERENCE.

PROPRIETARY AND CONFIDENTIAL THE INFORMATION CONTAINED IN THIS DRAWING IS THE SOLE PROPERTY OF KARMAN RUBBER. ANY REPRODUCTION IN PART OR AS A WHOLE WITHOUT THE WRITTEN PERMISSION OF KARMAN RUBBER IS PROHIBITED.	SIGNATURE		DATE
	DRAWN	B. SENECAL	10/16/2014
	CHECK	S. BROWN	10/16/2014
	ENGR	B. SENECAL	10/16/2014
	QA		
	STRESS		
	APPR		

UNLESS OTHERWISE SPECIFIED:  
DIMENSIONS ARE IN INCHES  
TOLERANCES:  
.X =  
.XX = ± 0.031  
.XXX =  
ANGLES = ± 1°  
INTERPRET GEOMETRIC TOLERANCING PER: ASME Y14.5M-1994



TITLE: K521 SERIES VIBRO-INSULATOR  
WWW.KARMAN.COM

AR	ELASTOMER	K521-4	1	4
1	MK521W	MK521W		3
1	MK521C	MK521C		2
	K521	K521		1
QTY.	DESCRIPTION	PART NUMBER	MATERIAL OR NOTES	ITEM

SIZE	CAGE CODE	DWG. NO.	REV
B		K521	1
DO NOT SCALE DRAWING		SCALE: 1:1	WEIGHT: 10.0 OZ.
		SHEET 1 OF 1	